






Effects of landscape modification on species richness patterns of fruit-feeding butterflies in Brazilian Atlantic Forest

Jessie P. Santos¹  | Thadeu Sobral-Souza²  | Keith S. Brown Jr¹ | Maurício Humberto Vancine³  | Milton C. Ribeiro³  | André V. L. Freitas¹ 

¹Departamento de Biologia Animal, Instituto de Biologia, Universidade Estadual de Campinas (UNICAMP), Campinas, Brazil

²Departamento de Botânica e Ecologia, Universidade Federal de Mato grosso (UFMT), Cuiabá, Brazil

³Departamento de Ecologia, Instituto de Biociências, Universidade Estadual Paulista (UNESP), Rio Claro, Brazil

Correspondence

Jessie P. Santos and André V. L. Freitas, Universidade Estadual de Campinas (UNICAMP), Departamento de Biologia Animal, Instituto de Biologia, Campinas, SP, Brazil.
Emails: jessiepereira@gmail.com (JS); baku@unicamp.br (AF)

Funding information

Programa de Pós Graduação em Ecologia—Unicamp; CAPES; FAPESP, Grant/Award Number: 2011/50225-3 and 2017/09676-8; CNPq, Grant/Award Number: 302585/2011-7 and 303834/2015-3; NSF, Grant/Award Number: DEB 1256742; SISBIOTA-Brasil/CNPq, Grant/Award Number: 563332/2010-7

Editor: Alan Andersen

Abstract

Aim: To assess the distributional patterns of fruit-feeding butterfly species richness in Atlantic Forest (AF) based on stack species distribution models (SSDM); to evaluate the relative contribution of climate and landscape in the patterns of butterfly species richness; and to recommend conservation guidelines for AF regions based on the obtained results.

Location: Brazilian Atlantic Forest.

Methods: We used SSDMs to generate potential distribution maps of butterfly species richness in AF. Our dataset comprises 7,062 records of 279 species, distributed across 122 local communities. We built richness maps based on climate and landscape models and analysed them separately to understand their contribution to the pattern of richness distribution. Then, we combined both models to build a consensus map. Finally, we designed specific conservation strategies based on richness categories distributed on the consensus map.

Results: The regions with high-predicted species richness for both climate and landscape models supported the main endemism locations described for other AF taxa in previous studies. Both models predicted intermediate values of species richness for most regions, but the patterns of richness distribution were not fully congruent. High species richness based on landscape metrics was frequently concentrated in the south. Furthermore, locations suitable for high species richness according to climate are near to the endemism centres, but also to dense urban centres, highlighting the potential impacts of the landscape modification on butterfly species richness.

Main conclusions: The distribution of fruit-feeding butterfly species richness and endemism reflect the classic division of AF in different sub-regions according to the endemism centres proposed by previous authors for other taxa. The availability of forested habitats seems to be a determining factor for the maintenance of high species richness in AF. Therefore, the loss of natural forest remnants due to landscape modification is the primary threat to butterfly diversity.

Jessie P. Santos and Thadeu Sobral-Souza should be considered joint first author.

This is an open access article under the terms of the Creative Commons Attribution License, which permits use, distribution and reproduction in any medium, provided the original work is properly cited.

© 2019 The Authors. *Diversity and Distributions* published by John Wiley & Sons Ltd

KEYWORDS

Atlantic Forest, butterflies, conservation, diversity, macroecology, species richness

1 | INTRODUCTION

Extensive human-induced activities have been altering the dynamics and functioning of ecosystems over the last decades, affecting both biodiversity and societal wellbeing (Cardinale et al., 2012; Hooper et al., 2012). Recent findings indicated that anthropogenic climate disruption and modification of natural habitats are the main drivers of species loss (Dirzo et al., 2014). Therefore, understanding biodiversity distribution patterns is an important step towards identifying priority areas and proposing more effective conservation policies to decrease the current biodiversity crisis (Margules & Pressey, 2000; Myers, Mittermeier, Mittermeier, Fonseca, & Kent, 2000).

Mapping areas of high species richness is one of the proxies used for the establishment of priority areas for conservation (Ceballos & Erlich, 2006; Jenkins, Pimm, & Joppa, 2013). The success of this approach is based on the premise that conserving the richer areas necessarily implies in preserving more species. However, conservation networks built under this criterion may not cover the species with small-range distributions (Nobrega & de Marco, 2011; Veach, Di Minin, Pouzols, & Moilanen, 2017). Therefore, both species richness and endemism are required to estimate the conservation value of a given area (Faith, Reid, & Hunter, 2004; Kier et al., 2009). Advanced macroecological techniques are increasingly able to fill the gaps in biodiversity knowledge (Hortal et al., 2015; Nobrega & de Marco, 2011; Siqueira, Durigan, de Marco, & Peterson, 2009). Thus, the use of species richness and endemism allied to the niche modelling techniques may represent an effective approach in conservation protocols (Costa, Nogueira, Machado, & Colli, 2010).

Climate and the barriers of dispersion are considered the main structuring factors of communities on a regional scale, from a hierarchical perspective of importance (Cornell & Harrison, 2014; Willig, Kaufman, & Stevens, 2003). Based on a species' physiological responses, one can identify the combination of climatic variables (i.e. the bioclimate envelope) that determine its distribution and then predict its potential distribution at broad-spatial scales (Guisan & Zimmermann, 2000; Pearson & Dawson, 2003). Conversely, at narrow-spatial scales, land use processes can be more important in determining species' distributions (Pearson & Dawson, 2003). A framework considering this hierarchical role of broad and narrow processes on the moulding of macroecological patterns of biodiversity has already been proposed, but has been rarely tested (Guisan & Rahbek, 2011). Therefore, tests involving the effects of narrow-scale processes on macroecological patterns are important, especially in highly human-impacted areas.

The Atlantic Forest (hereafter AF) domain occurs along a long latitudinal gradient of the Brazilian coast, extending west inland to areas of Paraguay and Argentina (Morellato & Haddad, 2000; Tabarelli,

Aguar, Ribeiro, Metzger, & Peres, 2010). The AF suffered for centuries from the overexploitation of its natural resources and human land occupation (Laurance, 2009), causing large-scale landscape modification and forest fragmentation (Ribeiro, Metzger, Martensen, Ponzoni, & Hirota, 2009). These threats, coupled with high rates of species endemism, make the AF a biodiversity hotspot and one of the three biomes that are most vulnerable to global change (Bellard et al., 2014; Myers et al., 2000). However, the effect of landscape modification on AF biodiversity in a macroecological perspective still requires investigation.

Historical climate and geological processes are traditionally considered the drivers of the high rates of endemism and diversity in the AF (Sobral-Souza & Lima-Ribeiro, 2017). One of the most well known hypotheses, for example, links diversification rates to the regions that remained stable through the historical climatic fluctuations and served as refuges for forest species (Carnaval & Moritz, 2008; Graham, Moritz, & Williams, 2006). On the other hand, recent processes, such as the wide-scale conversion of native forest into human-modified landscapes, have been leading the AF to alarming rates of habitat loss (Tabarelli et al., 2010). The effectiveness of conservation efforts depends on a clear understanding of both (a) the contribution of climate to species distribution, and (b) species' responses to human-modified landscapes. Notwithstanding, some variables related to landscape ecology, such as forest cover, land use and habitat change, are generally neglected in macroecological modelling processes (Carnaval & Moritz, 2008; Carnaval et al., 2014; Metzger, 2001).

Here, we modelled the distribution of fruit-feeding butterfly species using both climate variables and landscape metrics, to understand the patterns of species richness distribution in the AF. Tropical butterflies are considered good models for ecological studies due to their sensitivity to environmental changes (Bonebrake, Ponisio, Boggs, & Ehrlich, 2010). More specifically, the guild of fruit-feeding butterflies, whose adults primarily feed on rooting fruits, are employed as model organisms for environmental monitoring and conservation (Barlow, Overal, Araujo, Gardner, & Peres, 2007; Freitas et al., 2014; Ribeiro & Freitas, 2012; Santos, Marini-Filho, Freitas, & Uehara-Prado, 2016). Given the dependence on fruit and carrion resources (Horner-Devine, Daily, Ehrlich, & Boggs, 2003), the availability of natural forest habitats is essential for the maintenance of fruit-feeding butterfly species. Therefore, we hypothesized that the regions in which the large Atlantic Forest remnants are located would exhibit higher fruit-feeding butterfly species richness. Based on the above scenario, here we addressed the following questions: (a) How is the pattern of fruit-feeding butterfly richness distribution in the AF? (b) Are the patterns of species richness distribution predicted by climate conditions and landscape metrics congruent? Finally, we discuss conservation issues based on the obtained results.

2 | METHODS

2.1 | Study area

The Atlantic Forest (AF) roughly comprises two major vegetation types: the coastal Atlantic Rainforest and the Atlantic Semideciduous Forest (Morellato & Haddad, 2000). Based on a non-objective analysis of three biological groups distribution (birds, primates and swallowtail butterflies), Silva and Casteleti (2003) proposed a division of the AF into five sub-regions, namely: (a) Bahia, (b) Brejos Nordestinos, (c) Pernambuco, (d) Diamantina and (e) Serra do Mar (endemism centres), and three transitional regions: (a) São Francisco, (b) Araucaria forest and (c) Interior forests (Figure 1). This scheme was followed by Ribeiro et al. (2009), and several other subsequent authors since then. Currently, 70% of the Brazilian population are settled within the AF domain and the natural forest cover is confined to approximately 11% of its original extent (Ribeiro et al., 2009; Tabarelli et al., 2010). In this study, we followed the Atlantic Forest delimitation proposed by Muylaert et al. (2018).

2.2 | Species database

We used a large dataset of fruit-feeding butterfly communities from the Atlantic Forest, which consists of a compilation of published and unpublished records from 1949 to 2018. It comprises 7,062 occurrence records of 279 species, distributed across 122 well-sampled local communities. The association of historical species records with landscape metrics in niche modelling analysis is potentially problematic. As the landscape changes in time, their current metrics may not represent an equivalent niche from the time of the species records. However, most species records in our dataset pertain to local communities sampled during the last 20 years, which endorses synchrony with the landscape metrics (Figure S1.1). More details about the dataset can be found in Santos et al. (2018). We modelled the distribution of the 146 fruit-feeding butterfly species represented by at least 10 occurrence points. The remaining 133 species (with <10 occurrence points) were considered here as endemic or rare species and were counted only in the grid cells of occurrence and then summed to the final maps of richness.

2.3 | Climate and landscape variables

First, we built species-specific distribution models (SDMs) for landscape and climate variables separately. We separated these models to infer differently scaled processes driving species distributions (narrow and broad-scale ecological filters processes, respectively). Climate is known to be a driver of species distributions at broad-scale (Soberón & Nakamura, 2009) and landscape modification through habitat fragmentation is associated with major biodiversity changes, including species loss and local persistence at narrow-scale (Haddad et al., 2015; Thompson, Rayfield, & Gonzalez, 2017). Although we

consider the hierarchical effects of climate and landscape, we constructed our SDM models with both variables in the cell-size resolution of 1 km². We chose this resolution based on the differential occupation of butterfly species on ecological gradients in response to microclimatic variations. In addition, the Atlantic Forest terrain is subject to abrupt changes in altitude and slope due to its highly heterogeneous topography. Thus, we maintained the same cell-size resolution for landscape variables to catch the climatic variation within these different slope categories and directly compare with climate effects.

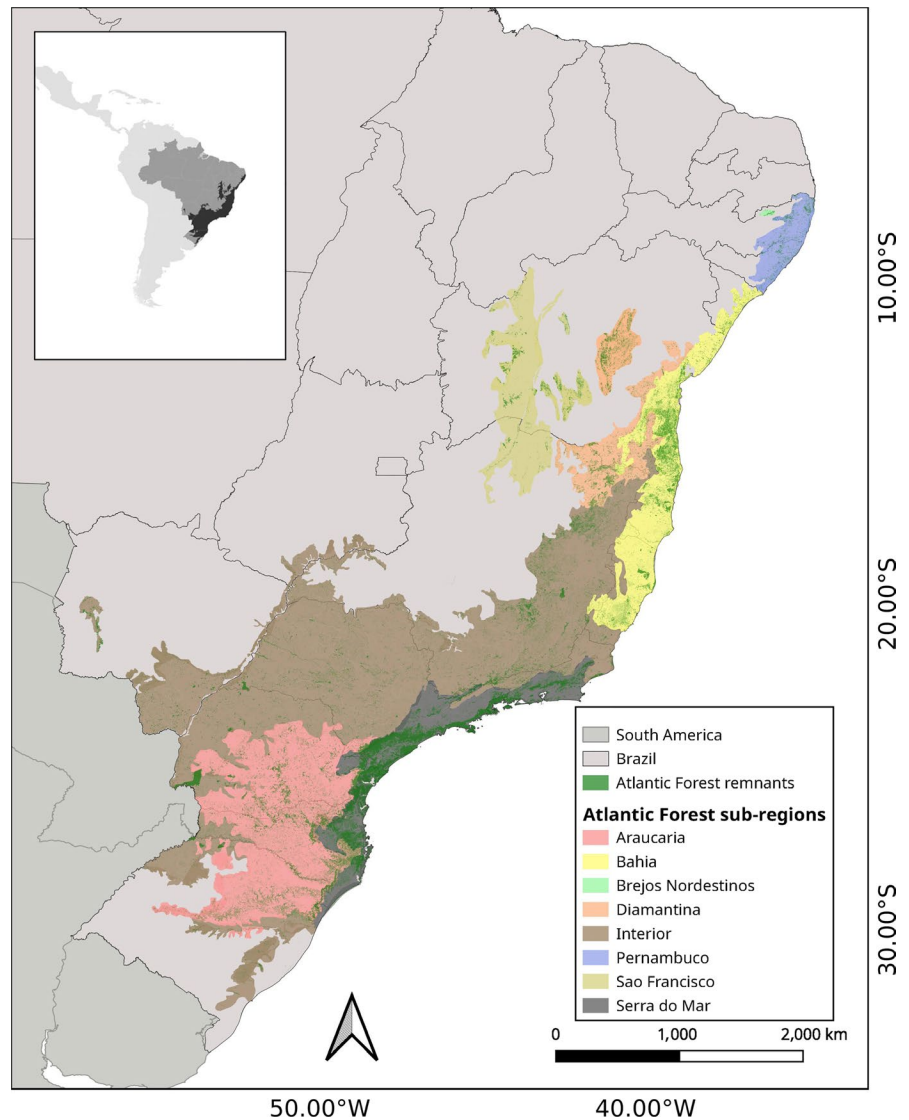
To build climate-based models, we used 19 bioclimatic variables (*WorldClim* version 2, <http://worldclim.org/version2>, Fick & Hijmans, 2017). We used principal component analysis (PCA) to convert all climate variables into linear uncorrelated variables. For landscape-based models, we used five variables: forest cover percentage, patch size, edge distance, slope and functional connectivity—assuming 180 m as the limit of dispersal (following Ribeiro, Batista, Prado, Brown, & Freitas, 2012). These variables were selected based on the premise that most fruit-feeding butterfly species are adapted to forested habitats and depend on fruit resources. All these variables were obtained from the Spatial Ecology and Conservation Laboratory at São Paulo State University (LEEC-UNESP) (M. C. Ribeiro pers. comm.). To remove collinearity between landscape variables, we applied the same PCA procedure employed for climate variables to the landscape variables. We selected the set of PCA-derived variables for both climate and landscape based on Kaiser–Guttman rule (retention of axes with eigenvalues higher than 1) as proposed in de Marco and Nóbrega (2018). Therefore, the first four axes of the climate and landscape ordinations were selected as variables, representing more than 90% of the cumulative proportion of variance in both cases (Table 1, see Figure S1.2). The PCA analyses were conducted in “RSTOOLBOX” R-package (Leutner, Horning, & Schwalb-Willmann, 2018).

2.4 | Predicting fruit-feeding butterfly richness in Atlantic Forest

We used ecological niche modelling (ENM) techniques to predict geographical patterns of fruit-feeding butterfly species richness in the AF. ENMs infer relationships between environmental variables and species occurrence points to predict the suitability of habitats in unknown sites (Peterson et al., 2011). The ENM procedure consists of using three information sources: (a) known occurrences of a given species, (b) environmental layers and (c) mathematical algorithms (Franklin, 2009; Peterson et al., 2011).

No single algorithm has the best performance in correlative models as they present distinct predictions according to the different niche breadth of species (Qiao et al., 2015). The combined use of algorithms increases the accuracy of predictions by considering different niche tolerances in the potential distribution of species (Araújo & New, 2007; Diniz-Filho et al., 2009). Thus, we conducted the ENMs based on four algorithms of distinct modelling methods: two

FIGURE 1 Distribution of the Atlantic Forest domain (following Muylaert et al., 2018), its biogeographical sub-regions (adapted from Silva & Casteleti, 2003), and the forest remnants (Ribeiro et al., 2009)



presence-only methods; envelope score—Bioclim (Nix, 1986) and Domain (Gower distance, Carpenter, Gillison, & Winter, 1993); and two machine-learning methods (presence-background records)—support vector machines (SVM) (Tax & Duin, 2004) and maximum entropy—MaxEnt (Phillips & Dudik, 2008). All algorithms were run in “DISMO” R-package (Hijmans, Phillips, Leathwick, & Elith, 2015), except for the SVM that was built in “KERNLAB” R-package (Karatzoglou, Smola, Hornik, & Zeileis, 2004).

To evaluate the resulting models, the species occurrence points were partitioned into two distinct subsets, 75% and 25% for model training and evaluation, respectively. As these subsets belong to the same data set, we repeated this procedure 10 times using the *k*-folding technique ($k = 2$) to reduce the collinearity. In total, we generated 40 predictions for climate-based models and another 40 for landscape-based models separately for each species (10 randomizations \times 4 algorithms). To transform the model outputs into binary maps we calculated threshold values using maximum sensitivity and specificity. These thresholds maximize the correctness of presences and absences and have been shown to be effective in

predicting occurrences from presence-only models (Liu, Newell, & White, 2016).

After defining the thresholds, we conducted the ensemble forecasting technique to obtain the prediction map of each species distribution (Araújo & New, 2007). The maps were generated based on climate and landscape separately. We produced the binary maps belonging to each algorithm (replicates) using the respective threshold values previously calculated and then summed the maps of the same algorithm and between the algorithms. To evaluate each of generated models, we estimated the values of True Skilled Statistic (TSS). The TSS values range from -1 to 1 , where negative or near-zero values indicate that predictions do not differ from randomly generated models, whereas models with values closer to 1 indicate that observed and modelled distributions are in near-perfect agreement (Allouche, Tsoar, & Kadmon, 2006).

Finally, to create the fruit-feeding butterfly richness map we inferred the lowest presence threshold (LPT) for each species prediction map (Pearson, Raxworthy, Nakamura, & Peterson, 2007)

TABLE 1 The first four axes of both Principal Component Analysis (PCA) of climate (19 variables extracted from Fick & Hijmans, 2017) and landscape (five variables extracted from the Spatial Ecology and Conservation Laboratory, Ribeiro pers. comm.), and their respective scores. (SD = Standard deviation)

Variables	Axis			
	PC1	PC2	PC3	PC4
Climate				
Annual Mean Temperature	-0.295	-0.125	-0.212	0.095
Mean Diurnal Range (Mean of monthly (max temp – min temp))	-0.037	0.278	0.119	0.509
Isothermality (Mean Diurnal Range/Temperature Annual Range) (×100)	-0.267	0.067	0.183	-0.033
Temperature seasonality (SD × 100)	0.279	-0.058	-0.118	0.272
Max Temperature of Warmest Month (MTWM)	-0.233	-0.025	-0.266	0.398
Min Temperature of Coldest Month (MTCM)	-0.288	-0.172	-0.143	-0.158
Temperature Annual Range (MTWM-MTCM)	0.176	0.197	-0.034	0.518
Mean Temperature of Wettest Quarter	-0.245	0.000	-0.204	0.160
Mean Temperature of Driest Quarter	-0.254	-0.202	-0.171	-0.038
Mean Temperature of Warmest Quarter	-0.225	-0.205	-0.325	0.241
Mean Temperature of Coldest Quarter	-0.312	-0.091	-0.135	-0.011
Annual Precipitation	0.234	0.064	-0.428	-0.086
Precipitation of Wettest Month	-0.022	0.408	-0.341	-0.205
Precipitation of Driest Month	0.269	-0.231	-0.165	0.034
Precipitation Seasonality (Coefficient of Variation)	-0.249	0.300	0.101	-0.062
Precipitation of Wettest Quarter	-0.024	0.406	-0.349	-0.217
Precipitation of Driest Quarter	0.270	-0.231	-0.168	0.044
Precipitation of Warmest Quarter	0.137	0.361	-0.238	-0.028
Precipitation of Coldest Quarter	0.198	-0.277	-0.252	-0.123
SD	3.073	1.930	1.458	1.419
Proportion of Variance	0.497	0.196	0.112	0.106
Cumulative Proportion	0.497	0.693	0.805	0.911
Landscape				
Forest patch size	0.503	-0.173	0.404	-0.606
Functional connectivity (200m)	0.536	-0.136	0.232	0.068
Edge distance	-0.139	-0.975	-0.131	0.107
Forest Cover Percentage	0.537	0.024	-0.006	0.733
Slope	0.391	0.030	-0.875	-0.283
SD	1.541	0.992	0.885	0.676
Proportion of Variance	0.475	0.197	0.157	0.091
Cumulative Proportion	0.475	0.672	0.828	0.920

Note: These four axes were selected based on the proportion of variance explained (>90%) and then posteriorly used in the modelling processes.

to transform each continuous frequencies into binary maps (0 for absence and 1 for presence). Overlapping all species binary maps, we obtained the predicted number of species occurrence (richness) of fruit-feeding butterflies in each cell of the AF delimitation. Guisan and Rahbek (2011) described this method as stack species distribution models (SSDM). All modelling steps described above were followed separately to build a climate-based and a landscape-based map, thus resulting in one map of climate-richness and another map of landscape richness (Figure 2a,b).

2.5 | Predicting conservation issues in AF butterfly richness

To evaluate the contribution of climate conditions and landscape metrics in richness patterns and propose conservation efforts, we conducted an *EcoLand* analysis (adapted from Ferro e Silva et al., 2018). We extracted the richness values from climate-based models and landscape-based maps and generated a scatter plot with the X-axis representing climate-based richness and the Y-axis representing

the landscape-based richness. Then, we established different threshold categories for both climate and landscape maps based on species richness: low richness (<0.25 of total richness), medium richness (between 0.25 and 0.75 of total richness) and high richness (>0.75 of total richness). Cells were then categorized in the following combinations: (a) areas with high climate and landscape richness, (b) high climate and intermediate landscape richness, (c) high climate and low landscape richness, (d) intermediate climate and high landscape richness, (e) intermediate climate and landscape richness; (f) intermediate climate and low landscape richness, (g) low climate and high landscape richness, (h) low climate and intermediate landscape richness, and (i) low climate and landscape richness. Each combination of climate and landscape categories of predicted richness in the scatter plot received a specific colour and was mapped, thus allowing identifying the combined effects of climatic and landscape conditions in species richness (Figure 2c). The *EcoLand* map was used for designing conservation plans according to the richness scenarios.

3 | RESULTS

3.1 | Climate-based models

According to the climate-based model, areas with high-predicted species richness have up to 162 species, and the areas with lowest richness have as few as 10 fruit-feeding species. Sites with high species richness are mostly concentrated in the south-eastern portion of AF, which include the Serra do Mar and Serra da Mantiqueira complexes, denominated as “Serra do Mar sub-region” by Silva and Casteleti (2003) (Figure 1). Within this sub-region, these areas comprise a narrow southern coastal strip that extends north-eastwards until the Doce river basin (Figure 3). The areas with lowest species richness are located within the São Francisco river basin, which is labelled the “São Francisco transitional sub-region” in Silva and Casteleti (2003) (Figure 1). Other areas with low predicted richness (less than a half of the maximum predicted richness) are found in the transition with the Cerrado (the Brazilian savanna) in the mid-west region and near the boundaries with Argentina and Paraguay (Figure 3).

3.2 | Landscape-based models

The landscape-based model predicted up to 190 fruit-feeding butterfly species in areas of high richness, whereas the most depleted sites had a minimum of 20 species. The region of high richness is mostly located in the southern portion of the Atlantic Forest, encompassing the interior of Santa Catarina (SC) and Paraná (PR) states, which include the Araucaria biogeographical sub-region (Figure 1). Other areas of high richness include some isolated spots in the Serra do Mar and Bahia biogeographical regions. Conversely, the mid-west region contained most areas with low richness according

to the landscape models. Low richness was also predicted in some areas of São Francisco and Pernambuco biogeographical sub-regions (Figure 4).

3.3 | Predicting conservation issues in AF butterfly richness

According to the *EcoLand* models, contiguous areas with high species richness predicted by both climate and landscape-based models are found in the complex of Serra do Mar and Serra da Mantiqueira mountain ranges. There are also small patches of high climate and landscape richness in southern AF (Araucaria sub-region), and in some north-eastern areas in Bahia, Pernambuco and interior sub-regions (red areas in Figure 5). Medium values of species richness predicted by both climate and landscape models were the most frequent cells in *EcoLand* analysis (light green areas in Figure 5). These areas are concentrated in one large patch in the mid-western AF (Interior sub-region) and two smaller patches in the north-eastern AF (Bahia and Pernambuco sub-regions). Our models showed that most areas in the AF have high species richness predicted by the landscape-based models but not for climate-based models, being the second most frequent cells in the *EcoLand* analysis (orange areas in Figure 5). These areas include the Araucaria (Paraná and Santa Catarina states) and the Bahia sub-regions. Areas with high richness according to climate-based models but low richness according to landscape-based models are mostly found adjacent to the high richness areas predicted by both models. These are probably the areas where butterfly richness was most affected by landscape modification and forest fragmentation. These areas are spread through practically all biogeographical sub-regions (dark green area in Figure 5), except the São Francisco sub-region. Finally, areas with low species richness predicted by at least one of our models (light blue) were found in the north-western region of AF, predominantly in the biogeographical sub-region of São Francisco basin.

4 | DISCUSSION

Here, we modelled the species richness of Atlantic Forest fruit-feeding butterflies using both climate variables and landscape metrics. Our findings demonstrate that the Serra do Mar sub-region is characterized by continuous high species richness areas, independently predicted by both climate and landscape models. Considering the combined effect of climate and landscape models in the *EcoLand* map, the high richness areas coincided with the location of the continuous forest remnants (Figures 1 and 5). Moreover, most of these species-rich spots are close to areas whose landscape-predicted richness values are lower than expected according to the climate-predicted richness (dark green areas in Figure 5). These findings clearly indicate the effects of landscape modification in the species

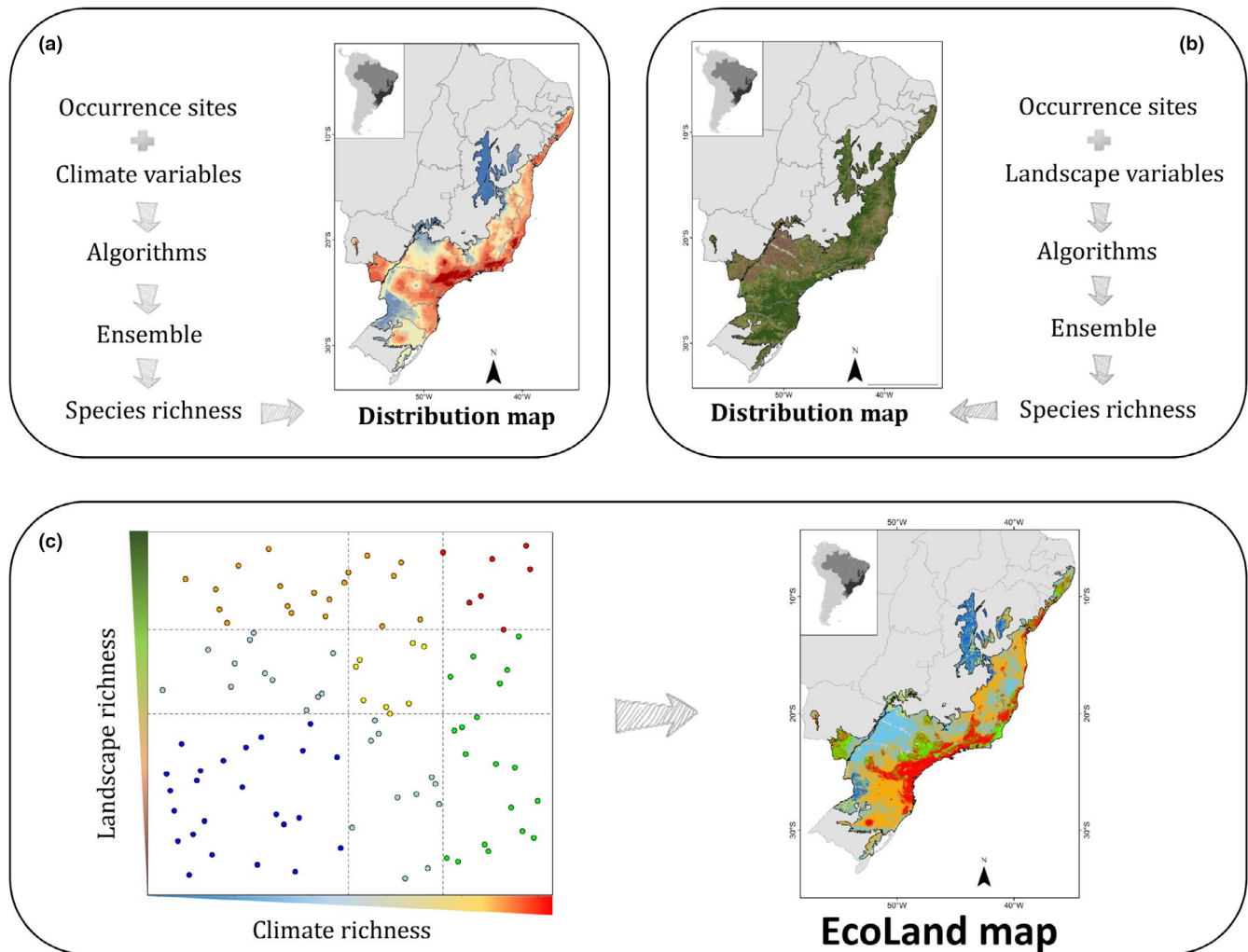


FIGURE 2 Framework demonstrating the steps of *EcoLand* analysis. The first step consisted of modelling the distribution of each butterfly species according to climate variables, using different algorithms. The ensemble method overlaps the maps from all algorithms and constructs a final consensus map for each species. From threshold values, the species suitability is converted in presence of species at each cell. These presences are summed to generate the distribution map (a). The same procedure is performed to landscape modelling, using landscape variables (b). Finally, the species richness predicted by the landscape in each cell was plotted against richness predicted by climate. The relation between the richness values was categorized. In the *EcoLand* map, these cell categories were identified in geographical space, thus allowing the understanding of the relative contribution of each variable in the species richness distribution (c)

richness patterns of fruit-feeding butterflies and the importance of the forest integrity for the maintenance of high butterfly richness indexes in the AF.

Forest cover is critical to the maintenance of specific microclimate conditions, the importance of which increases in seasonal areas (Horner-Devine et al., 2003). Some clades of fruit-feeding species are strictly associated with forest-shaded habitats and forage in specific forest vertical strata (DeVries, Murray, & Lande, 1997; Ribeiro & Freitas, 2012; Santos, Iserhard, Carreira, & Freitas, 2017). Fleshy fruits and organic matter, whose accumulation depends on the presence of forest cover, are important food sources for the adults of fruit-feeding species. Moreover, forest habitats represent good sources of host plants for their immature stages (Horner-Devine et al., 2003; Koh, 2007). The presence of forest fragments (source areas) and putative forest corridors are also critical for promoting the connectivity and species dispersion between areas, improving

the persistence of populations of many forest species (Brown & Freitas, 2002; Lees & Peres, 2008).

Our findings supported the idea of the AF endemism centres, proposed for several taxa such as several plant families (Prance, 1987), birds (Haffer, 1987; da Silva, Souza, & Castelletti, 2004), amphibians (Carnaval, Hickerson, Haddad, Rodrigues, & Moritz, 2009), mammals (Costa, Leite, Fonseca, & Fonseca, 2000) and other butterfly groups (Brown, 1979, 1987; Tyler, Brown, & Wilson, 1994). The regions containing high species richness predicted by both climate and landscape models are within the Serra do Mar, Bahia and Pernambuco sub-regions (Figures 1 and 5). These sub-regions coincide with three out of the four regions recognized as butterfly endemism centres in the AF, according to Brown's (1979) original propositions based on the distribution of geographic races (butterfly subspecies). Moreover, most records of endemic or rare species in the database lie within the areas with high species richness (see

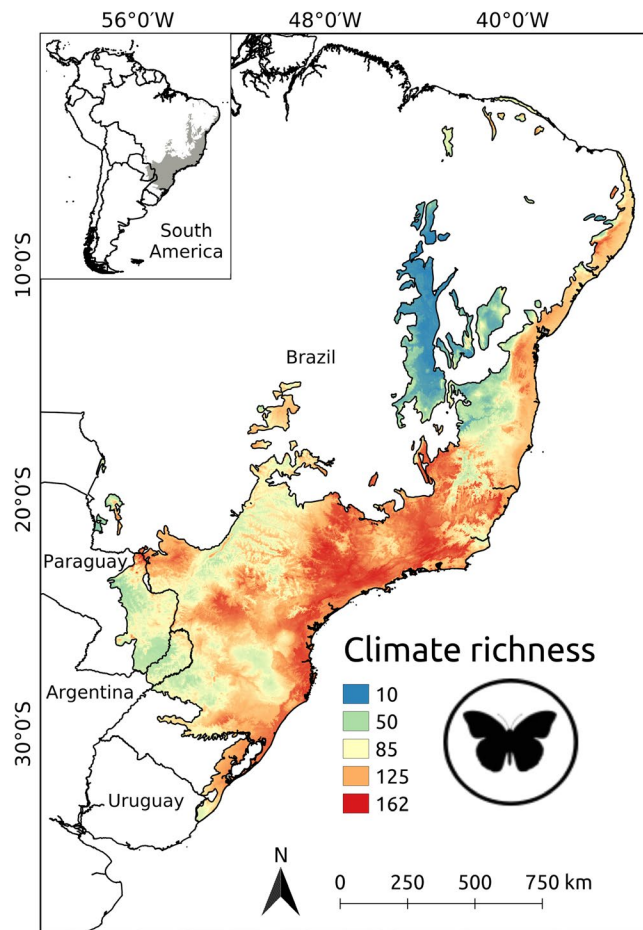


FIGURE 3 Distribution of fruit-feeding butterfly species richness in Atlantic Forest according to the climate model. Warmer colours indicate a higher number of predicted species

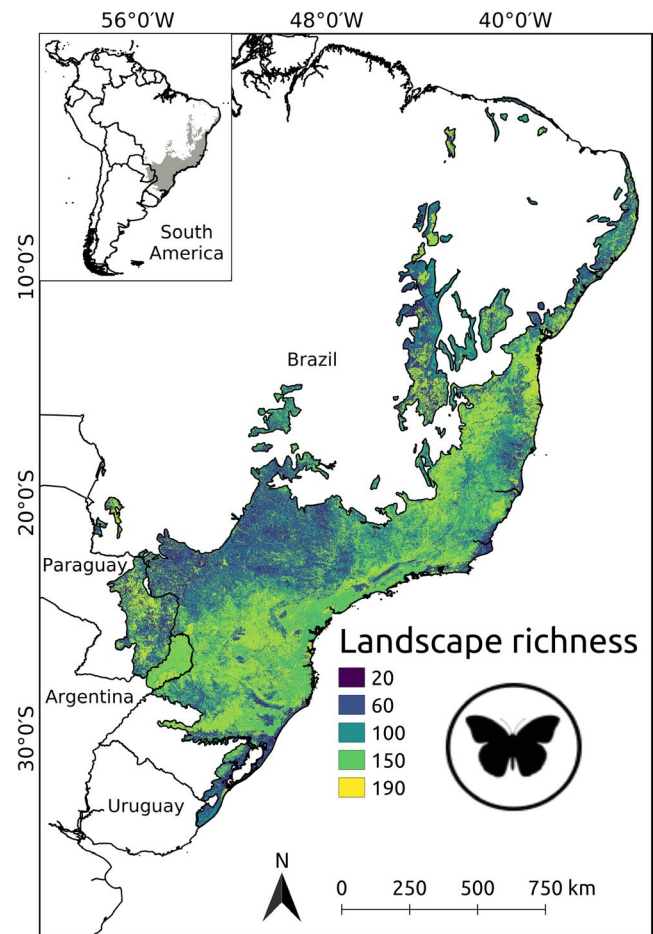


FIGURE 4 Distribution of fruit-feeding butterfly richness in Atlantic Forest according to the landscape model. The lighter colour regions represent the landscapes with a higher number of predicted species

Figure S1.3). As the occurrence of these species corresponds to the precise record location (in other words, not modelled), they increase the richness values only in that specific cell. Therefore, the restricted distribution of these species might explain the overlap between endemism centres and areas of high species richness.

The SSDM techniques are expected to present upper values for species richness due to the uncertainty about the dispersal capacity of each taxon and energy availability, but principally because they do not consider other community constraints such as the biotic interactions (Guisan & Rahbek, 2011). For example, our landscape-based models predicted that at least 20 fruit-feeding butterfly species are present at any AF locality. Therefore, one could assume that AF localities with <20 species are possibly under-sampled or are naturally poor in fruit-feeding species, such as the high altitude grasslands and the pampas (e.g. Carvalho, Piovesan, & Morais, 2015; Lemes, Carvalho, Ribeiro, & Morais, 2015; Morais, Lemes, & Ritter, 2012). However, our model is predicting the maximum species richness value based on landscape niche properties, without considering that communities may also be subject to constraints of other assembly processes, as the case of biological interactions. The non-incorporation of other assembly processes does not invalidate our general

patterns, but requires attention when interpreting them at the community level. As our models supposedly overpredict the richness values, it means they are not necessarily the same as the observed species richness.

5 | IMPLICATIONS FOR CONSERVATION

High human disturbance and agricultural expansion are continuously replacing natural habitats with more simplified and homogeneous landscapes (Hobbs, Hallet, Ehrlich, & Mooney, 2011). Habitat change may lead to generalist species replacing specialist species (i.e. biotic homogenization), with consequences for ecosystem functioning (Clavel, Julliard, & Devictor, 2011; Filgueiras et al., 2019; Olden, Poff, Douglas, Douglas, & Fausch, 2004). According to the “insurance hypothesis”, a higher diversity of functional groups provides greater stability and resilience of ecological processes, thus buffering ecosystem functioning against environmental changes (Tscharrnke et al., 2012; Yachi & Loreau, 1999). Decreasing species richness induced by landscape modification would reduce functionality, which in turn

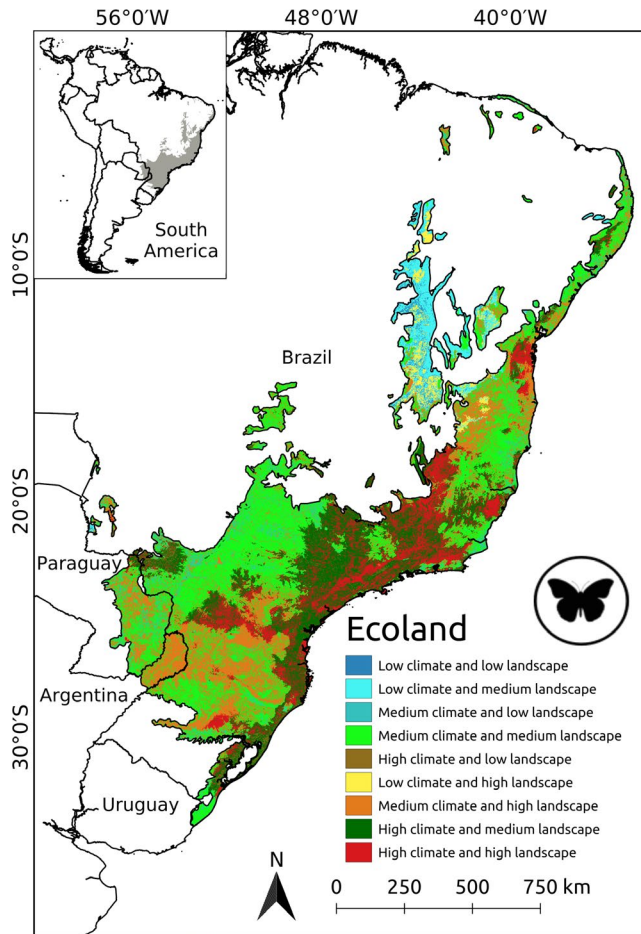


FIGURE 5 Fruit-feeding butterfly richness distribution in Atlantic Forest according to the *EcoLand* model, which takes into account the climate and landscape variables. The colour scheme indicates the different combinations between climate and landscape richness predictions

compromise the buffering effect of communities (Gámez-Virués et al., 2015). However, in ecosystems with high species richness, species with low and high productivity are expected to coexist, thus not necessarily affecting the ecosystem productivity due to the asynchrony of their responses (Yachi & Loreau, 1999).

Following the premise that higher species richness reduces the probability of compromising the ecosystem functioning, we can use our *EcoLand* results as a proxy for proposing different conservation strategies for the Atlantic Forest. For instance, areas containing high species richness predicted by both climate and landscape models would be the core places for conservation, as the case of the Serra do Mar sub-region (Figure 6). Indeed, this sub-region harbours the largest Atlantic continuous forest remnant, which covers high numbers of species richness and unique species (Figure S1.3). On the other hand, it also contains the largest Brazilian urban areas, resulting in high pressure for the adjacent natural habitats (CNUC, 2018; Rezende et al., 2018).

In the regions where landscape structure predicted richness values below than expected by climate, the possibility of habitat

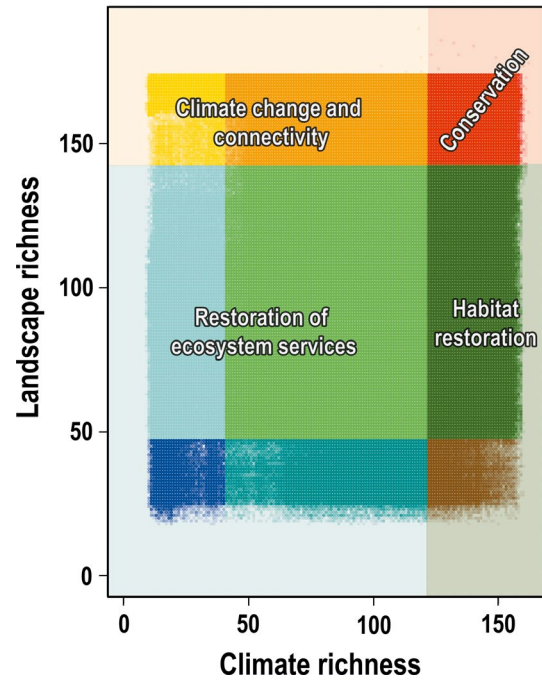


FIGURE 6 *EcoLand* colour scheme indicating different combinations between climate and landscape richness predictions and the recommended conservation and study approaches

restoration should be prioritized (dark green areas in Figures 5 and 6). Long-term restoration plans can expand suitable habitats for the maintenance of high local butterfly diversity (Sant'Anna, Ribeiro, Garcia, & Freitas, 2014) and, consequently, other biological groups. However, forest restoration would be less effective and highly expensive in areas that harbour dense urban centres in the AF domain. Therefore, a careful evaluation of any restoration plan is necessary, taking into account the resilience of the system, with the aim of optimizing strategies in terms of efficiency and cost (Tamposi, Martensen, Ribeiro, & Metzger, 2014). Nevertheless, we propose here the use of habitat restoration to increase local and regional species richness only; the reestablishment of other ecological functions and processes at narrow scales requires further studies before one could take decisions about the best restoration strategy for a given area.

In a scenario of climate change, some landscapes currently suitable for maintaining a high species richness may display a more suitable climate for harbouring a high species richness in the future. The Araucaria and São Francisco sub-regions (orange and yellow cells in Figures 5 and 6) are two examples that could fit the above scenario. Conversely, in the Bahia sub-region, forests have been devastated in the last decades and now persisting as a plethora of small fragments (Ribeiro et al., 2009). Therefore, in this region, the implementation of ecological corridors would improve the connectivity between the fragments and of these with other small hotspots of richness (Dunwiddie et al., 2009).

Finally, in those regions where both landscape and climate-based models predicted low species richness, the perspectives of richness maintenance through restoration or conservation practices are

equally low. In addition to the inauspicious climate for supporting a high local or regional species richness, the landscapes are so devastated that the conditions would hinder the dispersal and maintenance of viable populations of many forest-related biological groups. In short, these localities represent expensive restoration efforts, although they are locally important for conserving the most basic ecosystem services, such as pollination, water flow regulation and the reduction of greenhouse gases emission (Tambosi et al., 2014).

6 | CONCLUSIONS

Here, we aimed to unravel the relative contribution of climate and landscape variables to the distribution patterns of fruit-feeding butterfly species richness in the Atlantic Forest. Our results highlight the complementarity of different processes in shaping the patterns of species richness and the negative impact of human land use on natural habitats as biodiversity sources. Future studies addressing other biodiversity aspects (e.g. functional and phylogenetic diversity and beta diversity) are necessary to unravel the effect of human-induced processes on the AF biodiversity and trace out the best conservation strategies in this vanishing biome.

ACKNOWLEDGEMENTS

We thank the following institutions for financial support: Programa de Pós Graduação em Ecologia—Unicamp, CAPES, FAPESP (Fundação de Amparo à Pesquisa do Estado de São Paulo, 2011/50225-3, 2017/09676-8), CNPq (Conselho Nacional de Desenvolvimento Científico e Tecnológico, 302585/2011-7 and 303834/2015-3), NSF (DEB 1256742) and SISBIOTA-Brasil/CNPq (563332/2010-7). We are grateful to Keith Willmott for the careful revision of the submitted version of the manuscript and Neil Rosser for revising the English of the last version of the manuscript. This paper is part of the collaborative grant "Dimensions US-BIOTA São Paulo: A multidisciplinary framework for biodiversity prediction in the Brazilian Atlantic Forest" (2013/50297-0).

ORCID

Jessie P. Santos  <https://orcid.org/0000-0003-2015-9505>

Thadeu Sobral-Souza  <https://orcid.org/0000-0002-2367-2315>

Maurício Humberto Vancine  <https://orcid.org/0000-0001-9650-7575>

[org/0000-0001-9650-7575](https://orcid.org/0000-0001-9650-7575)

Milton C. Ribeiro  <https://orcid.org/0000-0002-4312-202X>

André V. L. Freitas  <https://orcid.org/0000-0002-5763-4990>

DATA AVAILABILITY STATEMENT

All GIS layers, the *EcoLand* analysis scripts and fruit-feeding butterfly database used for this study are available in the repository of Spatial Ecology and Conservation Lab at <https://github.com/LEEClab>

REFERENCES

Allouche, O., Tsoar, A., & Kadmon, R. (2006). Assessing the accuracy of species distribution models: Prevalence, kappa and the true skill

- statistic (TSS). *Journal of Applied Ecology*, 43, 1223–1232. <https://doi.org/10.1111/j.1365-2664.2006.01214.x>
- Araújo, M., & New, M. (2007). Ensemble forecasting of species distributions. *Trends in Ecology and Evolution*, 22(1), 42–47. <https://doi.org/10.1016/j.tree.2006.09.010>
- Barlow, J., Overal, W. L., Araujo, I. S., Gardner, T. A., & Peres, C. A. (2007). The value of primary, secondary and plantation forests for fruit-feeding butterflies in the Brazilian Amazon. *Journal of Applied Ecology*, 44(5), 1001–1012. <https://doi.org/10.1111/j.1365-2664.2007.01347.x>
- Bellard, C., Leclerc, C., Leroy, B., Bakkenes, M., Veloz, S., Thuiller, W., & Courchamp, F. (2014). Vulnerability of biodiversity hotspots to global change. *Global Ecology and Biogeography*, 23, 1376–1386. <https://doi.org/10.1111/geb.12228>
- Bonebrake, T. C., Ponisio, L. C., Boggs, C. L., & Ehrlich, P. R. (2010). More than just indicators: A review of tropical ecology butterfly ecology and conservation. *Biological Conservation*, 143(8), 1831–1841.
- Brown, K. S. Jr (1979). *Ecologia geográfica e evolução nas florestas neotropicais* (p. 120). Campinas, Brazil: UNICAMP.
- Brown, K. S. Jr (1987). Biogeography and evolution of neotropical butterflies. In T. C. Whitmore, & G. T. Prance (Eds.), *Biogeography and quaternary history in Tropical America* (pp. 66–104). Oxford, UK: Clarendon Press.
- Brown, K. S. Jr, & Freitas, A. V. L. (2002). Butterfly communities of urban fragments in Campinas, São Paulo, Brazil: Structure, instability, environmental correlates, and conservation. *Journal of Insect Conservation*, 6, 217–231.
- Cardinale, B. J., Duffy, J. E., Gonzalez, A., Hooper, D. U., Perrings, C., Venail, P., ... Naeem, S. (2012). Biodiversity loss and its impact on humanity. *Nature*, 486, 59–67. <https://doi.org/10.1038/nature11148>
- Carnaval, A. C., Hickerson, M. J., Haddad, C. F. B., Rodrigues, M. T., & Moritz, C. M. (2009). Stability predicts genetic diversity in the Brazilian Atlantic Forest hotspot. *Science*, 323, 785–789. <https://doi.org/10.1126/science.1166955>
- Carnaval, A. C., & Moritz, C. (2008). Historical climate modelling predicts patterns of current biodiversity in the Brazilian Atlantic Forest. *Journal of Biogeography*, 35(7), 1187–1201. <https://doi.org/10.1111/j.1365-2699.2007.01870.x>
- Carnaval, A. C., Waltari, E., Rodrigues, M. T., Rosauer, D., Vanderwal, J., Damasceno, R., ... Moritz, C. (2014). Prediction of phylogeographic endemism in an environmentally complex biome. *Proceedings of the Royal Society B*, 281(1792), 20141461.
- Carpenter, G., Gillison, A. N., & Winter, J. (1993). DOMAIN: A flexible modeling procedure for mapping potential distributions of plants and animals. *Biodiversity and Conservation*, 2, 667–680.
- Carvalho, A. P. S., Piovesan, G., & Morais, A. B. B. (2015). Butterflies (Lepidoptera: Papilionoidea) of grassland areas in the Pampa biome, southern Brazil. *Check List*, 11(5), article 1772.
- Ceballos, G., & Ehrlich, P. R. (2006). Global mammal distributions, biodiversity hotspots, and conservation. *Proceedings of the National Academy of Sciences of the United States of America*, 103(51), 19374–19379. <https://doi.org/10.1073/pnas.0609334103>
- Clavel, J., Julliard, R., & Devictor, V. (2011). Worldwide decline of specialist species: Toward a global functional homogenization? *Frontiers in Ecology and the Environment*, 9(4), 222–228. <https://doi.org/10.1890/080216>
- CNUC/MMA (2018). Retrieved from www.mma.gov.br/cadastro_uc
- Cornell, H. V., & Harrison, S. P. (2014). What are species pools and when are they important? *Annual Review of Ecology, Evolution and Systematics*, 45, 45–67. <https://doi.org/10.1146/annurev-ecolsys-120213-091759>
- Costa, E. P., Leite, Y. L. R., Fonseca, G. B., & Fonseca, M. T. (2000). Biogeography of South American forest mammals: Endemism and diversity in the Atlantic Forest. *Biotropica*, 32(4b), 872–881.
- Costa, G. C., Nogueira, C., Machado, R. B., & Colli, G. R. (2010). Sampling bias and the use of ecological niche modeling in conservation

- planning: A field evaluation in a biodiversity hotspot. *Biodiversity and Conservation*, 19(3), 883–899. <https://doi.org/10.1007/s10531-009-9746-8>
- da Silva, J. M. C., Souza, M. C., & Castelletti, C. H. M. (2004). Areas of endemism for passerine birds in the Atlantic forest, South America. *Global Ecology and Biogeography*, 13, 85–92. <https://doi.org/10.1111/j.1466-882X.2004.00077.x>
- de Marco, P. Jr, & Nóbrega, C. C. (2018). Evaluating collinearity effects on species distribution models: An approach based on virtual species simulation. *PLoS ONE*, 13, 9. <https://doi.org/10.1371/journal.pone.0202403>
- de Moraes, A. B. B., Lemes, R., & Ritter, C. D. (2012). Borboletas (Lepidoptera: Hesperioidea e Papilionoidea) de Val de Serra, região central do Rio Grande do Sul, Brasil. *Biota Neotropica*, 12(2), 175–183. <https://doi.org/10.1590/S1676-06032012000200017>
- DeVries, P. J., Murray, D., & Lande, R. (1997). Species diversity in vertical, horizontal, and temporal dimensions of a fruit-feeding butterfly community in an Ecuadorian rainforest. *Biological Journal of Linnean Society*, 62, 343–364. <https://doi.org/10.1111/j.1095-8312.1997.tb01630.x>
- Diniz-Filho, J. A. F., Bini, L. M., Rangel, T. F., Loyola, R. D., Hof, C., Nogués-Bravo, D., & Araújo, M. B. (2009). Partitioning and mapping uncertainties in ensembles of forecasts of species turnover under climate change. *Ecography*, 32, 897–906. <https://doi.org/10.1111/j.1600-0587.2009.06196.x>
- Dirzo, R., Young, H. S., Galetti, M., Ceballos, G., Isaac, N. G. B., & Collen, B. (2014). Defaunation in the Anthropocene. *Science*, 345(6195), 401–406.
- Dunwiddie, P. W., Hall, S. A., Ingraham, M. W., Bakker, J. D., Nelson, K. S., Fuller, R., & Gray, E. (2009). Rethinking conservation practice in light of climate change. *Ecological Restoration*, 27, 320–329.
- Faith, D. P., Reid, C. A. M., & Hunter, J. (2004). Integrating phylogenetic diversity, complementarity, and endemism for conservation assessment. *Conservation Biology*, 18(1), 255–261. <https://doi.org/10.1111/j.1523-1739.2004.00330.x>
- Ferreira e Silva, A. M., Sobral-Souza, T., Vancine, M. H., Muylaert, R. L., de Abreu, A. P., Pelloso, S. M., ... Toledo, M. J. D. O. (2018). Spatial prediction of risk areas for vector transmission of *Trypanosoma cruzi* in the State of Paraná, southern Brazil. *PLoS Neglected Tropical Diseases*, 12(10), e0006907. <https://doi.org/10.1371/journal.pntd.0006907>
- Fick, S. E., & Hijmans, R. J. (2017). WorldClim 2: New 1-km spatial resolution climate surfaces for global land areas. *International Journal of Climatology*, 37, 4302–4315. <https://doi.org/10.1002/joc.5086>
- Filgueiras, B. K. C., Melo, D. H. A., Uehara-Prado, M., Freitas, A. V. L., Leal, I. R., & Tabarelli, M. (2019). Compensatory dynamics on the community structure of fruit-feeding butterflies across hyper-fragmented Atlantic forest habitats. *Ecological Indicators*, 98, 276–284. <https://doi.org/10.1016/j.ecolind.2018.11.005>
- Franklin, J. (2009). *Mapping species distributions: Spatial inference and prediction*. Cambridge, UK: Cambridge University Press.
- Freitas, A. V. L., Iserhard, C. A., Santos, J. P., Carreira, J. Y. O., Ribeiro, D. B., Melo, D. H. A., ... Uehara-Prado, M. (2014). Studies with butterfly bait traps: An overview. *Revista Colombiana De Entomologia*, 40(2), 209–218.
- Gámez-Virués, S., Perović, D. J., Gossner, M. M., Börschig, C., Blüthgen, N., de Jong, H., ... Westphal, C. (2015). Landscape simplification filters species traits and drives biotic homogenization. *Nature Communications*, 6, 8568. <https://doi.org/10.1038/ncomms9568>
- Graham, C. H., Moritz, C., & Williams, S. E. (2006). Habitat history improves prediction of biodiversity in rainforest fauna. *Proceedings of the National Academy of Sciences of the United States of America*, 103(3), 632–636. <https://doi.org/10.1073/pnas.0505754103>
- Guisan, A., & Rahbek, C. (2011). SESAM – A new framework integrating macroecological and species distribution models for predicting spatio-temporal patterns of species assemblages. *Journal of Biogeography*, 38, 1433–1444. <https://doi.org/10.1111/j.1365-2699.2011.02550.x>
- Guisan, A., & Zimmermann, N. E. (2000). Predictive habitat distribution models in ecology. *Ecological Modelling*, 135, 147–186. [https://doi.org/10.1016/S0304-3800\(00\)00354-9](https://doi.org/10.1016/S0304-3800(00)00354-9)
- Haddad, N. M., Brudvig, L. A., Clobert, J., Davies, K. F., Gonzalez, A., Holt, R. D., ... Townshend, J. R. (2015). Habitat fragmentation and its lasting impact on Earth's ecosystems. *Science Advances*, 1(2), e1500052. <https://doi.org/10.1126/sciadv.1500052>
- Haffer, J. (1987). Biogeography of Neotropical birds. In T. C. Whitmore, & G. T. Prance (Eds.), *Biogeography and quaternary history in Tropical America* (pp. 105–150). Oxford, UK: Clarendon Press.
- Hijmans, R. J., Phillips, S., Leathwick, J., & Elith, J. (2015). *Dismo: Species distribution modeling*. R Package Version 1.0-12.
- Hobbs, R. J., Hallet, L. M., Ehrlich, P. R., & Mooney, H. A. (2011). Intervention ecology: Applying ecological science in the twenty-first century. *BioScience*, 61(6), 442–450. <https://doi.org/10.1525/bio.2011.61.6.6>
- Hooper, D. U., Adair, E. C., Cardinale, B. J., Byrnes, J. E. K., Hungate, B. A., Matulich, K. L., ... O'Connor, M. I. (2012). A global synthesis reveals biodiversity loss as a major driver of ecosystem change. *Nature*, 486, 105–109. <https://doi.org/10.1038/nature11118>
- Horner-Devine, M. C., Daily, G. C., Ehrlich, P. R., & Boggs, C. L. (2003). Countryside biogeography of tropical butterflies. *Conservation Biology*, 17, 168–177. <https://doi.org/10.1046/j.1523-1739.2003.01310.x>
- Hortal, J., Bello, F., Diniz-Filho, J. A., Lewinsohn, T., Lobo, J. M., & Ladle, R. J. (2015). Seven shortfalls that beset large-scale knowledge of biodiversity. *Annual Review of Ecology, Evolution and Systematics*, 46, 523–549. <https://doi.org/10.1146/annurev-ecolsys-112414-054400>
- Jenkins, C. N., Pimm, S. L., & Joppa, L. N. (2013). Global patterns of terrestrial vertebrate diversity and conservation. *Proceedings of the National Academy of Sciences of the United States of America*, 110(28), E2602–E2610. <https://doi.org/10.1073/pnas.1302251110>
- Karatzoglou, A., Smola, A., Hornik, K., & Zeileis, A. (2004). kernlab – An S4 package for kernel methods in R. *Journal of Statistical Software*, 11(9), 1–20.
- Kier, G., Kreft, H., Lee, T. M., Jetz, W., Ibsch, P. L., Nowicki, C., ... Barthlott, W. (2009). A global assessment of endemism and species richness across island and mainland regions. *Proceedings of the National Academy of Sciences of the United States of America*, 106(23), 9322–9327. <https://doi.org/10.1073/pnas.0810306106>
- Koh, L. P. (2007). Impacts of land use change on Southeast Asian forest butterflies: A review. *Journal of Applied Ecology*, 44, 703–713. <https://doi.org/10.1111/j.1365-2664.2007.01324.x>
- Laurance, W. F. (2009). Conserving the hottest of the hotspots. *Biological Conservation*, 142, 1137. <https://doi.org/10.1016/j.biocon.2008.10.011>
- Lees, A. C., & Peres, C. A. (2008). Conservation value of remnant riparian forest corridors of varying quality for Amazonian birds and mammals. *Conservation Biology*, 22(2), 439–449. <https://doi.org/10.1111/j.1523-1739.2007.00870.x>
- Lemes, R., Carvalho, A. P. S., Ribeiro, T. C., & Moraes, A. B. B. (2015). Borboletas de áreas verdes urbanas de Santa Maria, sul do Brasil (Lepidoptera: Papilionoidea). *SHILAP Revista De Lepidopterologia*, 43(169), 95–111.
- Leutner, B., Horning, N., & Schwalb-Willmann, J. (2018). *RStoolbox: Tools for remote sensing data analysis*. R package version 0.2.3. Retrieved from <https://CRAN.R-project.org/package=RStoolbox>
- Liu, C., Newell, G., & White, M. (2016). On the selection of thresholds for predicting species occurrence with presence-only data. *Ecology and Evolution*, 6(1), 337–348. <https://doi.org/10.1002/ece3.1878>
- Margules, C. R., & Pressey, R. L. (2000). Systematic conservation planning. *Nature*, 405, 243–253. <https://doi.org/10.1038/35012251>
- Metzger, J. P. (2001). O que é ecologia de paisagens? *Biota Neotropica*, 1, 1–9. <https://doi.org/10.1590/S1676-06032001000100006>

- Morellato, L. P. C., & Haddad, C. F. B. (2000). Introduction: The Brazilian Atlantic Forest. *Biotropica*, 32(4), 786–792.
- Muyllaert, R. L., Vancine, M. H., Bernardo, R., Oshima, J. E. F., Sobral-Souza, T., Tonetti, V. R., ... Ribeiro, M. C. (2018). Uma nota sobre os limites territoriais da Mata Atlântica. *Oecologia Australis*, 22(3), 302–311.
- Myers, N., Mittermeier, R. A., Mittermeier, C. G., Fonseca, G. A. B., & Kent, J. (2000). Biodiversity hotspots for conservation priorities. *Nature*, 403, 853–858. <https://doi.org/10.1038/35002501>
- Nix, H. A. (1986). A biogeographic analysis of Australian Elapid snakes. In R. Longmore (Ed.), *Atlas of Australian elapid snakes* (pp. 4–15). Canberra, Australia: Australian Government Publishing Service.
- Nobrega, C. C., & de Marco, P. Jr (2011). Unprotecting the rare species: A niche-based gap analysis for odonates in a core Cerrado area. *Diversity and Distributions*, 17(3), 491–505. <https://doi.org/10.1111/j.1472-4642.2011.00749.x>
- Olden, J. D., Poff, N. L., Douglas, M. R., Douglas, M. E., & Fausch, K. D. (2004). Ecological and evolutionary consequences of biotic homogenization. *Trends in Ecology & Evolution*, 19(1), 18–24. <https://doi.org/10.1016/j.tree.2003.09.010>
- Pearson, R. G., & Dawson, T. P. (2003). Predicting the impacts of climate change on the distribution of species: Are bioclimate envelope models useful? *Global Ecology & Biogeography*, 12, 361–371. <https://doi.org/10.1046/j.1466-822X.2003.00042.x>
- Pearson, R. G., Raxworthy, C. J., Nakamura, M., & Peterson, A. T. (2007). Predicting species distributions from small numbers of occurrence records: A test case using cryptic geckos in Madagascar. *Journal of Biogeography*, 34, 102–117.
- Peterson, A. T., Soberón, J., Pearson, R. G., Anderson, R. P., Martinez-Meyer, E., Nakamura, M., & Araújo, M. B. (2011). *Ecological niches and geographic distributions*. Princeton, NJ: Princeton University Press.
- Phillips, S. J., & Dudik, M. (2008). Modeling of species distributions with MaxEnt: New extensions and a comprehensive evaluation. *Ecography*, 31, 161–175. <https://doi.org/10.1111/j.0906-7590.2008.5203.x>
- Prance, G. T. (1987). Biogeography of Neotropical plants. In T. C. Whitmore, & G. T. Prance (Eds.), *Biogeography and quaternary history in Tropical America* (pp. 46–65). Oxford, UK: Clarendon Press.
- Qiao, H., Soberón, J., & Peterson, A. T. (2015). No silver bullets in correlative ecological niche modelling: Insights from testing among many potential algorithms for niche estimation. *Methods in Ecology and Evolution*, 6, 1126–1136. <https://doi.org/10.1111/2041-210X.12397>
- Rezende, C. L., Scarano, F. R., Assad, E. D., Joly, C. A., Metzger, J. P., Strassburg, B. B. N., ... Mittermeier, R. A. (2018). From hotspot to hopespot: An opportunity for the Brazilian Atlantic Forest. *Perspectives in Ecology and Conservation*, 16(4), 208–214.
- Ribeiro, D. B., Batista, R., Prado, P. I., Brown, K. S. Jr, & Freitas, A. V. L. (2012). The importance of small scales to the fruit-feeding butterfly assemblages in a fragmented landscape. *Biodiversity and Conservation*, 21(3), 811–827. <https://doi.org/10.1007/s10531-011-0222-x>
- Ribeiro, D. B., & Freitas, A. V. L. (2012). The effect of reduced-impact logging on fruit-feeding butterflies in Central Amazon, Brazil. *Journal of Insect Conservation*, 16(5), 733–744. <https://doi.org/10.1007/s10841-012-9458-3>
- Ribeiro, M. C., Metzger, J. P., Martensen, A. C., Ponzoni, F. J., & Hirota, M. M. (2009). The Brazilian Atlantic Forest: How much is left, and how is the remaining forest distributed? Implications for conservation. *Biological Conservation*, 142(6), 1141–1153. <https://doi.org/10.1016/j.biocon.2009.02.021>
- Sant'Anna, C. L. B., Ribeiro, D. B., Garcia, L. C., & Freitas, A. V. L. (2014). Fruit-feeding butterfly communities are influenced by restoration age in tropical forests. *Restoration Ecology*, 22(4), 480–485. <https://doi.org/10.1111/rec.12091>
- Santos, J. P., Freitas, A. V. L., Brown, K. S., Carreira, J. Y. O., Gueratto, P. E., Rosa, A. H. B., ... Ribeiro, M. C. (2018). Atlantic butterflies: A data set of fruit-feeding butterfly communities from the Atlantic forests. *Ecology*. <https://doi.org/10.1002/ecy.2507>
- Santos, J. P., Iserhard, C. A., Carreira, J. Y. O., & Freitas, A. V. L. (2017). Monitoring fruit-feeding butterfly assemblages in two vertical strata in seasonal Atlantic Forest: Temporal species turnover is lower in the canopy. *Journal of Tropical Ecology*, 33(5), 345–355. <https://doi.org/10.1017/S0266467417000323>
- Santos, J. P., Marini-Filho, O. J., Freitas, A. V. L., & Uehara-Prado, M. (2016). Monitoramento de borboletas: o papel de um indicador biológico na gestão de unidades de conservação. *Biodiversidade Brasileira*, 6, 87–99.
- Silva, J. M. C., & Casteleti, C. H. M. (2003). Status of the biodiversity of the Atlantic Forest of Brazil. In C. Galindo-Leal, & I. G. Câmara (Eds.), *The Atlantic Forest of South America: Biodiversity status, threats, and outlook* (pp. 43–59). Washington, DC: CABS and Island Press.
- Siqueira, M. F., Durigan, G., de Marco, P. Jr, & Peterson, A. T. (2009). Something from nothing: Using landscape similarity and ecological niche modeling to find rare plant species. *Journal for Nature Conservation*, 17(1), 25–32. <https://doi.org/10.1016/j.jnc.2008.11.001>
- Soberón, J., & Nakamura, M. (2009). Niches and distributional areas: Concepts, methods, and assumptions. *Proceedings of the National Academy of Sciences of the United States of America*, 106(Supplement_2), 19644–19650. <https://doi.org/10.1073/pnas.0901637106>
- Sobral-Souza, T., & Lima-Ribeiro, M. S. (2017). De volta ao passado: Revisitando a história biogeográfica das florestas neotropicais úmidas. *Oecologia Australis*, 21(2), 93–107. <https://doi.org/10.4257/oeco.2017.2102.01>
- Tabarelli, M., Aguiar, A. V., Ribeiro, M. C., Metzger, J. P., & Peres, C. A. (2010). Prospects for biodiversity conservation in the Atlantic Forest: Lessons from aging human-modified landscapes. *Biological Conservation*, 143(10), 2328–2340. <https://doi.org/10.1016/j.biocon.2010.02.005>
- Tambosi, L. R., Martensen, A. C., Ribeiro, M. C., & Metzger, J. P. (2014). A framework to optimize biodiversity restoration efforts based on habitat amount and landscape connectivity. *Restoration Ecology*, 22(2), 169–177. <https://doi.org/10.1111/rec.12049>
- Tax, D. M. J., & Duin, R. P. W. (2004). Support vector data description. *Machine Learning*, 54(1), 45–66. <https://doi.org/10.1023/B:MACH.0000008084.60811.49>
- Thompson, P. L., Rayfield, B., & Gonzalez, A. (2017). Loss of habitat and connectivity erodes species diversity, ecosystem functioning, and stability in metacommunity networks. *Ecography*, 40, 98–108. <https://doi.org/10.1111/ecog.02558>
- Tscharntke, T., Tylianakis, J. M., Rand, T. A., Didham, R. K., Fahrig, L., Batáry, P., ... Westphal, C. (2012). Landscape moderation of biodiversity patterns and processes – Eight hypotheses. *Biological Reviews*, 87, 661–685. <https://doi.org/10.1111/j.1469-185X.2011.00216.x>
- Tyler, H., Brown, K. S., & Wilson, K. (1994). *Swallowtail butterflies of the Americas. A study in biological dynamics, ecological diversity, biosystematics and conservation*. Gainesville, FL: Scientific Publishers.
- Veach, V., Di Minin, E., Pouzols, F. M., & Moilanen, A. (2017). Species richness as criterion for global conservation area placement leads to large losses in coverage of biodiversity. *Diversity and Distributions*, 23(7), 715–726. <https://doi.org/10.1111/ddi.12571>
- Willig, M. R., Kaufman, D. M., & Stevens, R. D. (2003). Latitudinal gradients of biodiversity: Pattern, process, scale and synthesis. *Annual Review of Ecology, Evolution, and Systematics*, 34, 273–309. <https://doi.org/10.1146/annurev.ecolsys.34.012103.144032>
- Yachi, S., & Loreau, M. (1999). Biodiversity and ecosystem productivity in a fluctuating environment: The insurance hypothesis. *Proceedings of the National Academy of Sciences of the United States of America*, 96, 1463–1468. <https://doi.org/10.1073/pnas.96.4.1463>

BIOSKETCHES

Jessie P. Santos research is focused on community ecology, species distribution modelling and diversity patterns in different scales; conservation and evaluation of the impacts of human disturbance on biodiversity, using butterflies as organism models.

The "Laboratory of Ecology and Systematics of Butterflies" (Laboratório de Ecologia e Sistemática de Borboletas-LABBOR) team focuses its research in studies on natural history, ecology and systematics of Neotropical Lepidoptera, including taxonomy, phylogeny, adult and immature morphology, community ecology and conservation. Visit us at: <https://www2.ib.unicamp.br/labor/site/>

Author contributions: JPS and TSS conceived the ideas; JPS, TSS, AVLF, KBS, MHV and MCR collected and analysed the data; JPS, TSS, and AVLF led the writing.

How to cite this article: Santos JP, Sobral-Souza T, Brown KS Jr, Vancine MH, Ribeiro MC, Freitas AVL. Effects of landscape modification on species richness patterns of fruit-feeding butterflies in Brazilian Atlantic Forest. *Divers Distrib.* 2020;26:196–208. <https://doi.org/10.1111/ddi.13007>

SUPPORTING INFORMATION

Additional supporting information may be found online in the Supporting Information section.